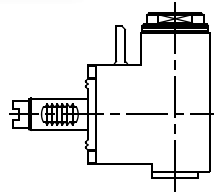


**INDEX** VDI-25 C65/MS42C

Higher precision : 0,005 mm runout

IN.013.C65x3

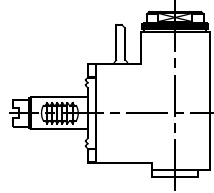
**RADIAL INCREASER**



ER-16A  
RATIO 1:3  
8000 RPM MAX

IN.013.C65x2

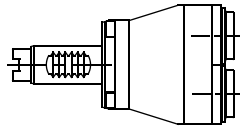
**RADIAL INCREASER**



ER-16A  
RATIO 1:2  
8000 RPM MAX

IN.023.C65

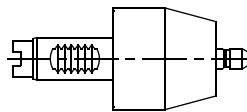
**AXIAL DOUBLE  
OUTPUT INCREASER**



ER-16A  
RATIO 1:2  
5000 RPM MAX

IN.000.MS42C

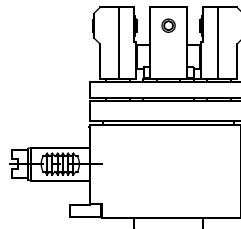
**AXIAL**



ER-8  
RATIO 1:1  
6000 RPM MAX

IN.015.MS42C

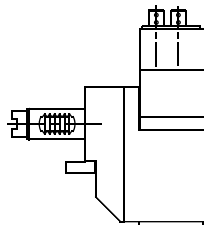
**RADIAL SPECIAL**



ER-8  
RATIO 1:1  
4000 RPM MAX

IN.029.MS42C

**RADIAL DOUBLE  
OUTPUT**



SPECIAL  
RATIO 1:1  
5000 RPM MAX

Tooling for : BIGLIA - CMZ - DOOSAN - DUPLOMATIC - EMCO - HAAS - INDEX - MAZAK - MIYANO - MORI SEIKI - NAKAMURA - OKUMA - SAUTER - SCHAUBLIN - SPINNER - ETC.

**MADAULA GROUP**

Chicago - São Paulo

Barcelona - Bologna - Waghäusel

[hello@madaula.com](mailto:hello@madaula.com)

Specials : welcome



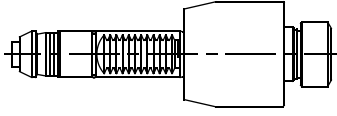
**INDEX**

VDI-30  
GE65/C200/MC170/MC200/MC400

Higher precision : 0,005 mm runout

IN.000.GE65

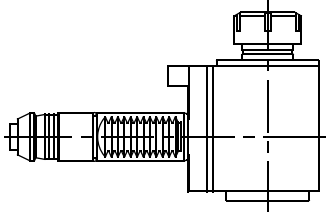
**AXIAL**



ER-25  
RATIO 1:1  
4000 RPM MAX

IN.010.GE65

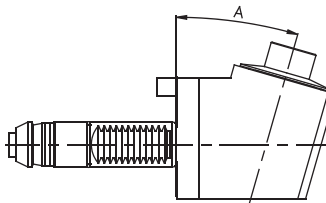
**RADIAL**



ER-25  
RATIO 1:1  
4000 RPM MAX

IN.012.GE65

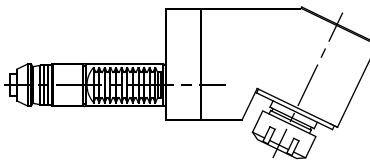
**FIXED ANGLE  
(ANY ANGLE)**



SPECIAL  
RATIO 1:1  
6000 RPM MAX

IN.015.GE65

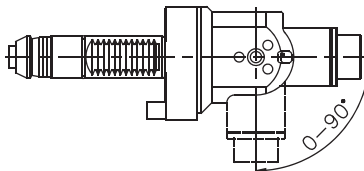
**RADIAL  
SPECIAL**



ER-25  
RATIO 2:1  
3000 RPM MAX

IN.021.GE65

**RADIAL  
ADJUSTABLE**



SPECIAL  
RATIO 1:1  
6000 RPM MAX

Tooling for : BIGLIA - CMZ - DOOSAN - DUPLOMATIC - EMCO - HAAS - INDEX - MAZAK - MIYANO - MORI SEIKI - NAKAMURA - OKUMA - SAUTER - SCHAUBLIN - SPINNER - ETC.

MADAULA GROUP

Chicago - São Paulo

Barcelona - Bologna - Waghäusel

hello@madaula.com

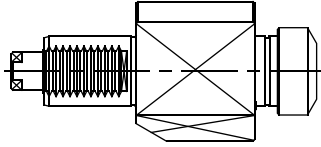
Specials : welcome



**INDEX** VDI-40  
GU800-3000/CFG250

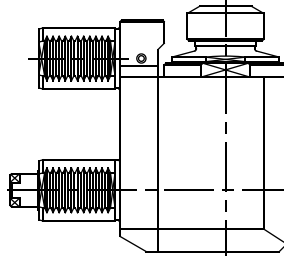
Higher precision : 0,005 mm runout

IN.005.GU800 **AXIAL**



ER-32  
RATIO 1:1  
6000 RPM MAX

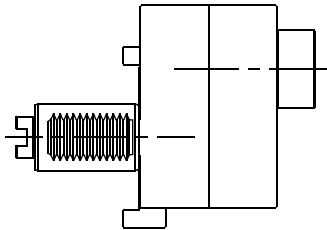
IN.016.GU800 **RADIAL**



ER-32  
RATIO 1:1  
6000 RPM MAX

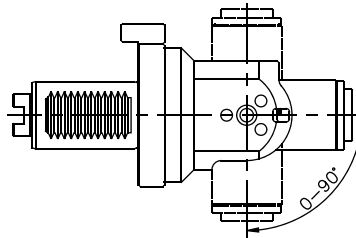
**INDEX** VDI-40 V250/V300

IN.006.V250 **AXIAL OFFSET**



SPECIAL  
RATIO 1:1  
4000 RPM MAX

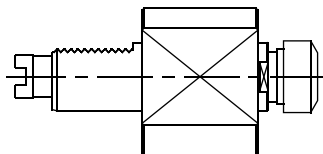
IN.021.V300 **RADIAL  
ADJUSTABLE**



ER-16  
RATIO 2:1  
8000 RPM MAX

**INDEX** VDI-40 G300

IN.000.G300 **AXIAL**



ER-25  
RATIO 1:1  
4000 RPM MAX

Tooling for : BIGLIA - CMZ - DOOSAN - DUPLOMATIC - EMCO - HAAS - INDEX - MAZAK - MIYANO - MORI SEIKI - NAKAMURA - OKUMA - SAUTER - SCHAUBLIN - SPINNER - ETC.

MADAULA GROUP  
Chicago - São Paulo  
Barcelona - Bologna - Waghäusel

hello@madaula.com

Specials : welcome

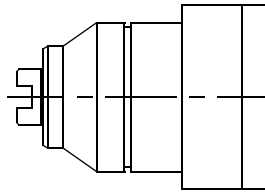


**INDEX** Ø 67 G300

Higher precision : 0,005 mm runout

IN.005.G300

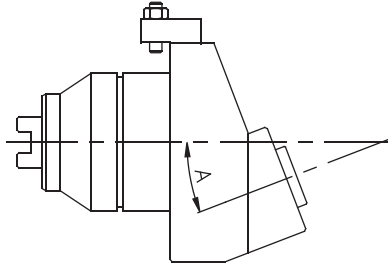
**AXIAL WITH  
HIGH PRESSURE  
COOLANT THROUGH**



CAPTO C4  
RATIO 1:1  
4000 RPM MAX

IN.012.G300

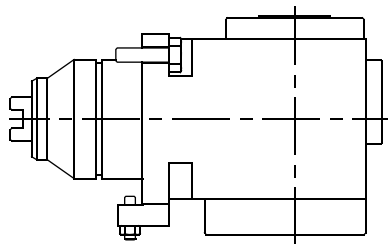
**FIXED ANGLE  
(ANY ANGLE)**



ER-16A  
RATIO 1:1  
4000 RPM MAX

IN.016.G300

**RADIAL WITH  
HIGH PRESSURE  
COOLANT THROUGH**



CAPTO C4  
RATIO 1:1  
4000 RPM MAX

Tooling for : BIGLIA - CMZ - DOOSAN - DUPLOMATIC - EMCO - HAAS - INDEX - MAZAK - MIYANO - MORI SEIKI - NAKAMURA - OKUMA - SAUTER - SCHAUBLIN - SPINNER - ETC.

**MADAULA GROUP**

Chicago - São Paulo

Barcelona - Bologna - Waghäusel

[hello@madaula.com](mailto:hello@madaula.com)

Specials : welcome

