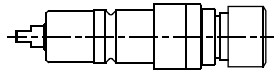


GILDEMEISTER SPEED 12/20/32 linear

Higher precision : 0,005 mm runout

GD.000.SPEED

AXIAL

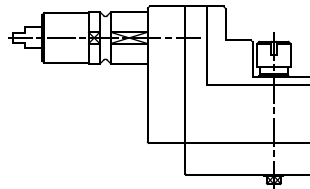


ER-16
RATIO 1:1
5.000 RPM MAX.



GD.011.SPEED

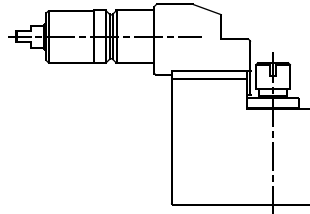
RADIAL SET-BACK



ER-11
RATIO 1:1
6.000 RPM MAX.

GD.011.SPEED

RADIAL SET-BACK

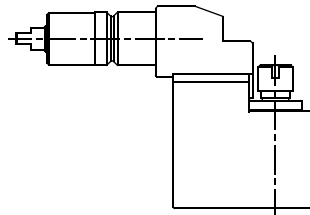


ER-11
RATIO 1:1
5.000 RPM MAX.



GD.013.SPEED

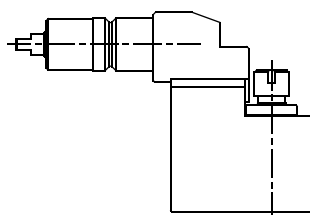
RADIAL SET-BACK SPEEDER



ER-11
RATIO 1:2
5.000 RPM MAX.

GD.014.SPEED

RADIAL SET-BACK REDUCER

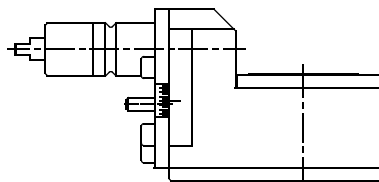


ER-11
RATIO 2:1
6.000 RPM MAX.



GD.035.SPEED

THREAD WHIRLING



WHIRLING HOLDER
RATIO 2:1
6.000 RPM MAX.



Tooling for : BIGLIA - CMZ - DOOSAN - DUPLOMATIC - EMCO - HAAS - INDEX - MAZAK - MIYANO - MORI SEIKI - NAKAMURA - OKUMA - SAUTER - SCHAUBLIN - SPINNER - ETC.

MADAULA GROUP

Chicago - São Paulo

Barcelona - Bologna - Waghäusel

hello@madaula.com

Specials : welcome

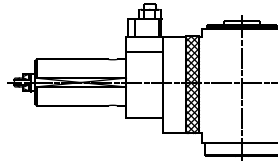


GILDEMEISTER SPEED 20/32/42 linear

Higher precision : 0,005 mm runout

GD.010.SPRINT

RADIAL

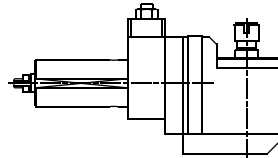


ER-16A
RATIO 1:1
6.000 RPM MAX.



GD.011.SPRINT

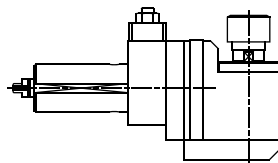
**RADIAL
SET-BACK**



ER-11
RATIO 1:1
6.000 RPM MAX.

GD.011.SPRINT

**RADIAL
SET-BACK**

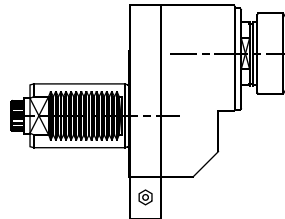


ER-16
RATIO 1:1
4000 RPM MAX



SA.001.5080

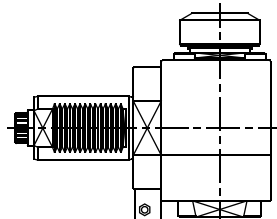
**AXIAL
OFFSET**



ER-40
RATIO 1:1
4000 RPM MAX

SA.010.5080

RADIAL

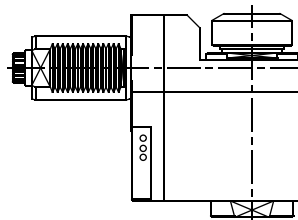


ER-40
RATIO 1:1
4000 RPM MAX



SA.011.5080

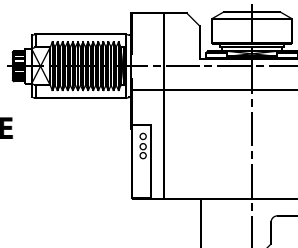
**RADIAL
SET-BACK**



ER-40
RATIO 1:1
4000 RPM MAX

SA.017.5080

**RADIAL SET-BACK
WITH HIGH PRESSURE
COOLANT THROUGH**



ER-40
RATIO 1:1
4000 RPM MAX



Tooling for : BIGLIA - CMZ - DOOSAN - DUPLOMATIC - EMCO - HAAS - INDEX - MAZAK - MIYANO - MORI SEIKI - NAKAMURA - OKUMA - SAUTER - SCHAUBLIN - SPINNER - ETC.

MADAULA GROUP

Chicago - São Paulo

Barcelona - Bologna - Waghäusel

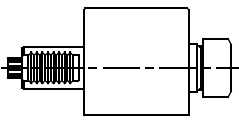

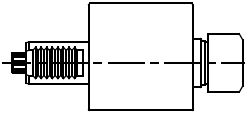

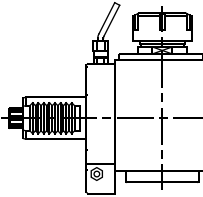

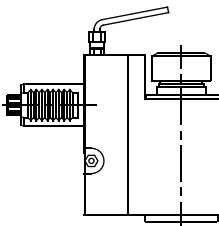

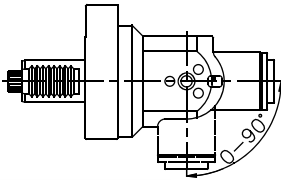

hello@madaula.com

Specials : welcome

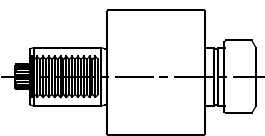

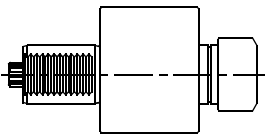

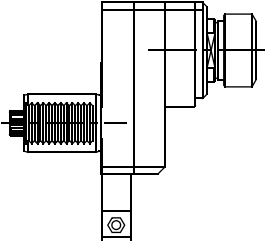



GILDEMEISTER VDI-30 DIN-5482

Higher precision : 0,005 mm runout

| | | | | |
|-------------|---------------------------------------------------------|-------------------------------------------------------------------------------------|------------------------------------|--------------------------------------------------------------------------------------|
| SA.000.3082 | AXIAL |  | ER-25 RATIO 1:1 6000 RPM MAX |  |
| SA.005.3082 | AXIAL WITH HIGH PRESSURE COOLANT THROUGH |  | ER-25 RATIO 1:1 6000 RPM MAX |  |
| SA.010.3082 | RADIAL |  | ER-25 RATIO 1:1 6000 RPM MAX |  |
| SA.011.3082 | RADIAL SET-BACK |  | ER-25 RATIO 1:1 6000 RPM MAX |  |
| SA.021.3082 | RADIAL ADJUSTABLE |  | ER-16 RATIO 1:1 6000 RPM MAX |  |

GILDEMEISTER VDI-40 DIN-5482

| | | | | |
|-------------|---------------------------------------------------------|-------------------------------------------------------------------------------------|------------------------------------|---------------------------------------------------------------------------------------|
| SA.000.4082 | AXIAL |  | ER-32 RATIO 1:1 5000 RPM MAX |  |
| SA.005.4082 | AXIAL WITH HIGH PRESSURE COOLANT THROUGH |  | ER-32 RATIO 1:1 5000 RPM MAX |  |
| SA.001.4082 | AXIAL OFFSET |  | ER-32 RATIO 1:1 5000 RPM MAX |  |

Tooling for : BIGLIA - CMZ - DOOSAN - DUPLOMATIC - EMCO - HAAS - INDEX - MAZAK - MIYANO - MORI SEIKI - NAKAMURA - OKUMA - SAUTER - SCHAUBLIN - SPINNER - ETC.

MADAULA GROUP
Chicago - São Paulo
Barcelona - Bologna - Waghäusel

hello@madaula.com

Specials : welcome

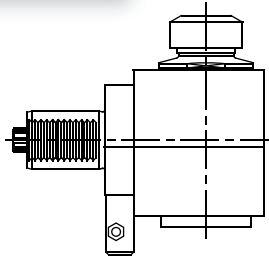


GILDEMEISTER VDI-40 DIN-5482

Higher precision : 0,005 mm runout

SA.010.4082

RADIAL

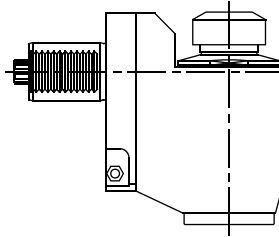


ER-32
RATIO 1:1
5000 RPM MAX



SA.011.4082

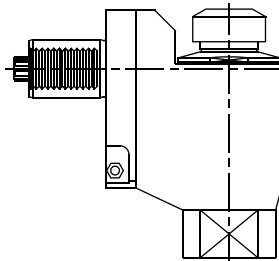
RADIAL SET-BACK



ER-32
RATIO 1:1
5000 RPM MAX

SA.017.4082

RADIAL SET-BACK WITH HIGH PRESSURE COOLANT THROUGH

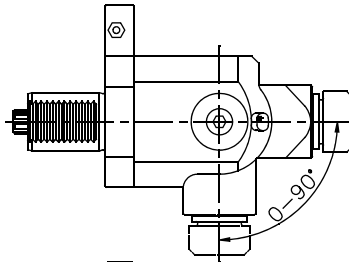


ER-32
RATIO 1:1
5000 RPM MAX



SA.021.4082

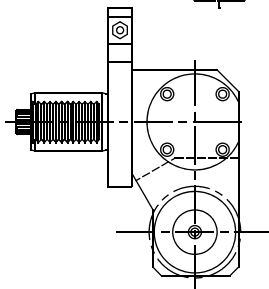
RADIAL ADJUSTABLE



ER-25
RATIO 1:1
5000 RPM MAX

SA.030.4082

SAW-MILL REDUCER



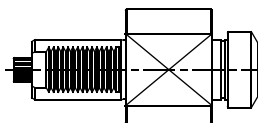
Ø 22
RATIO 2.5:1
4000 RPM MAX



GILDEMEISTER VDI-50 DIN-5482

SA.000.5082

AXIAL



ER-40
RATIO 1:1
4000 RPM MAX



Tooling for : BIGLIA - CMZ - DOOSAN - DUPLOMATIC - EMCO - HAAS - INDEX - MAZAK - MIYANO - MORI SEIKI - NAKAMURA - OKUMA - SAUTER - SCHAUBLIN - SPINNER - ETC.

MADAULA GROUP

Chicago - São Paulo

Barcelona - Bologna - Waghäusel

hello@madaula.com

Specials : welcome

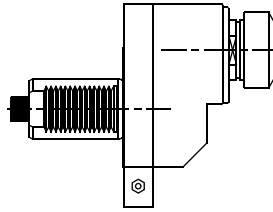


GILDEMEISTER VDI-50 DIN-5482

Higher precision : 0,005 mm runout

SA.001.5082

**AXIAL
OFFSET**

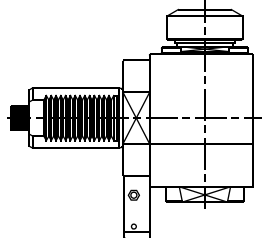


ER-40
RATIO 1:1
4000 RPM MAX



SA.010.5082

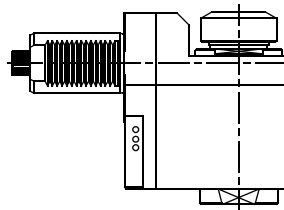
RADIAL



ER-40
RATIO 1:1
4000 RPM MAX

SA.011.5082

**RADIAL
SET-BACK**

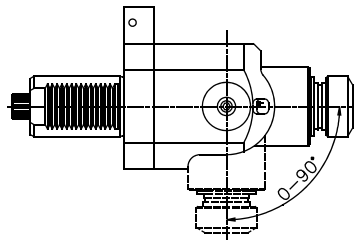


ER-40
RATIO 1:1
4000 RPM MAX



SA.021.5082

**RADIAL
ADJUSTABLE**

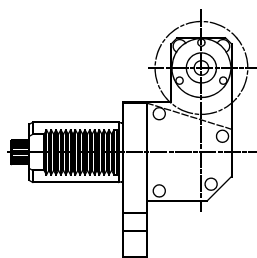


ER-32
RATIO 1:1
4000 RPM MAX



SA.030.5082

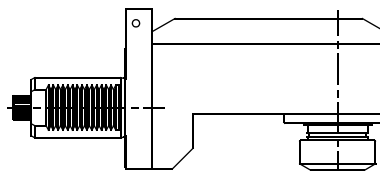
SAW-MILL



Ø 25.4
RATIO 1:1
2500 RPM MAX

SA.040.5082

**WORK INSIDE
TUBES**



ER-40
RATIO 1:1
4000 RPM MAX



Tooling for : BIGLIA - CMZ - DOOSAN - DUPLOMATIC - EMCO - HAAS - INDEX - MAZAK - MIYANO - MORI SEIKI - NAKAMURA - OKUMA - SAUTER - SCHAUBLIN - SPINNER - ETC.

MADAULA GROUP

Chicago - São Paulo

Barcelona - Bologna - Waghäusel

hello@madaula.com

Specials : welcome



GILDEMEISTER VDI-60 DIN-5482

Higher precision : 0,005 mm runout

| | | | | |
|-------------|-------------------------------------------------------------------|--|------------------------------------|--|
| SA.000.6082 | AXIAL | | ER-50 RATIO 1:1 3000 RPM MAX | |
| SA.005.6082 | AXIAL WITH COOLANT THROUGH | | ER-50 RATIO 1:1 3000 RPM MAX | |
| SA.003.6082 | AXIAL REDUCER | | ER-50 RATIO 1:1 3000 RPM MAX | |
| SA.010.6082 | RADIAL | | ER-50 RATIO 1:1 3000 RPM MAX | |
| SA.011.6082 | RADIAL SET-BACK | | ER-50 RATIO 1:1 3000 RPM MAX | |
| SA.014.6082 | RADIAL REDUCER | | ER-50 RATIO 1:1 3000 RPM MAX | |
| SA.016.6082 | RADIAL WITH HIGH PRESSURE COOLANT THROUGH | | ER-50 RATIO 1:1 3000 RPM MAX | |
| SA.017.6082 | RADIAL SET-BACK WITH HIGH PRESSURE COOLANT THROUGH | | ER-50 RATIO 1:1 3000 RPM MAX | |

Tooling for : BIGLIA - CMZ - DOOSAN - DUPLOMATIC - EMCO - HAAS - INDEX - MAZAK - MIYANO - MORI SEIKI - NAKAMURA - OKUMA - SAUTER - SCHAUBLIN - SPINNER - ETC.

MADAULA GROUP
Chicago - São Paulo
Barcelona - Bologna - Waghäusel

hello@madaula.com
Specials : welcome

